

Devonport High School for Boys PTFA Uniform Shop Order Form 2008

Item						Price	Subtotal
Blazers	Chest/ Size*	Shoulder Width A	Sleeve Length B	Back Length C			
	30" – 8	14.5"	21"	25"		£24	
	31" – 9	14.5"	22"	26"		£24	
	32" – 10	15"	23"	27"		£24	
	33" – 11	15.5"	24"	28.5"		£24	
	34" – 12	16"	24.5"	29"		£29	
	35" – 13	16.25"	24.5"	30"		£29	
	36" – 14	16.5"	24.5"	31"		£29	
	37" – 15	17.25"	25"	31"		£29	
	38" – 16	17.5"	25"	31"		£30	
	40" – 18	18"	25.5"	31.5"		£30	
	42" – 20	18.5"	26"	32"		£33	
	44" – 22	19"	26.5"	33.5"		£34	
	46" – 24	19"	26.5"	34"		£36	
Ties						£3.50	
Rugby Shirts	Chest/ Size*	Shoulder Width A	Sleeve Length B	Actual chest C	Back Length		
	30"-32"	16.5"	20"	32"	25"	£13.50	
	34"	18.5"	20.5"	35"	27.5"	£14	
	36"	20"	21.5"	38"	29"	£15	
	38"-40"	21.5"	22"	42"	30.5"	£17	
	42"-44"	25"	23"	46"	33"	£18	
	46"-48"					£18	
Rugby shorts (Cotton)	Waist* A		Length B	Waist to crotch C			
	26"-28"		14"	12.5"		£4.50	
	30"-32"		16"	14"		£5.50	
	34"-36"		17"	15"		£5.50	
	38"-40"		17.5"	15"		£5.50	
Polo shirts	Size*	Shoulder Width A		Actual Chest C	Back Length		
	11 – 12	17"		35"	25"	£8	
	13	17.5"		38"	25.25"	£8	
	S	18.5"		40"	27"	£9.50	
	M	19.5"		42"	29.25"	£11	
	L					£11	
P E shorts	Waist* A		Length	Waist to crotch			
	26"-28"		14"	11.5"		£4.50	
	30"-32"		16"	13"		£4.50	
	34"-36"		17"	14"		£5	
	38"-40"		17.5"	14"		£5	
Games socks	Shoe size*						
	Size 3-6					£3.50	
	Size 7-11					£3.50	
Gum Shield						£1.50	

Cash / Cheque.	Total
-----------------------	--------------

Measurements for Devonport High School for Boys PTFA Uniform Shop Orders

The measurements marked with an * are the manufacturers' sizes, when selling the garments to the school. The other measurements were taken by the uniform shop Mums and so are approximate. The extra measurements make more of a difference to the fit. As an example; my own son's chest measures 27" but he is 5'4" tall with long arms and so the 30" blazer is too small but the 33" blazer fits well. **Our Shop e-mail is: shop@dhsb.org**

Glossary (See page 2 for the measurement chart):

Back Length: A straight line from the top of the collar to the bottom of the hem at the centre back.

Shoulder Width: Across the back of the garment from where the shoulder seam meets the top of the sleeve to the same point on the opposite side. (N.B. swimmers tend to have broad shoulders.)

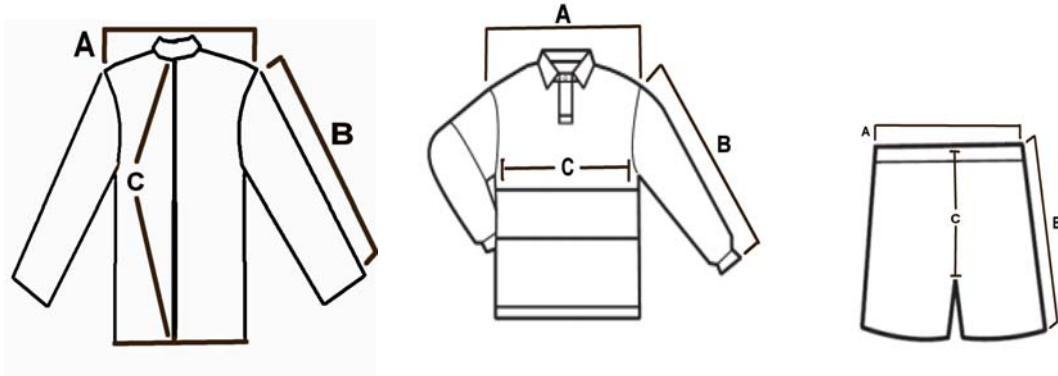
Sleeve Length: From the shoulder seam to the wrist hem down the outer side of the arm.

Actual Chest: The measurement of the garment at under arm level (Rather than the manufacturers' sizing.)

Waist: Both shorts have draw strings and elastic and so the waist is less important to the fit. It should be the Simon Cowell height waist and not the surfing dude height waist! (If in doubt ask a teenager!)

Waist to crotch: from the top of the waist seam to the crotch seam at centre back following the curve. I recommend measuring a pair of trousers which you know fit already!

Length (shorts): From the top of waist to the hem, down the side seam. .



Please enclose a £10 deposit to secure your order, this is non-returnable and the balance is payable on collection. (cheques payable to DHSB PTA Shop)

Pupil's Name.....Name on Cheque.....

Contact address.....

.....Contact Telephone.....

Please tick preferred collection date:

Monday 30 June (Induction Day) 2.00 pm – 3.00 pm ___ or 3.00 pm - 4.30pm___

Saturday 5 July 9.30 am - 10.30 am ___

Thursday 10 July (Parents' meeting) 3 00 pm - 4.20 pm ___ or end of meeting___

Fridays 12.15 pm - 1.30 pm 27 June___ or 4 July___ or 11 July___ 18 July___